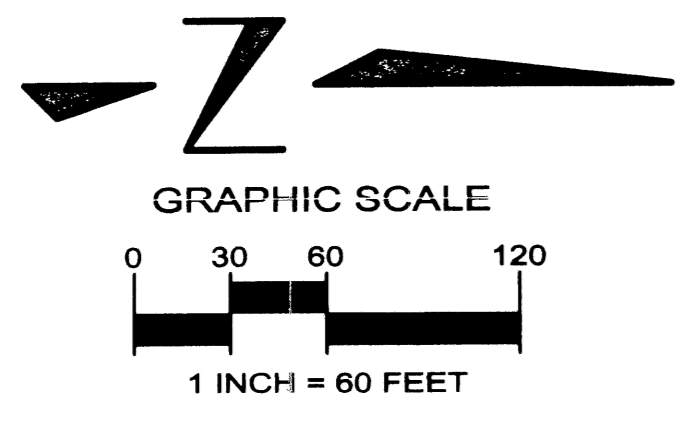
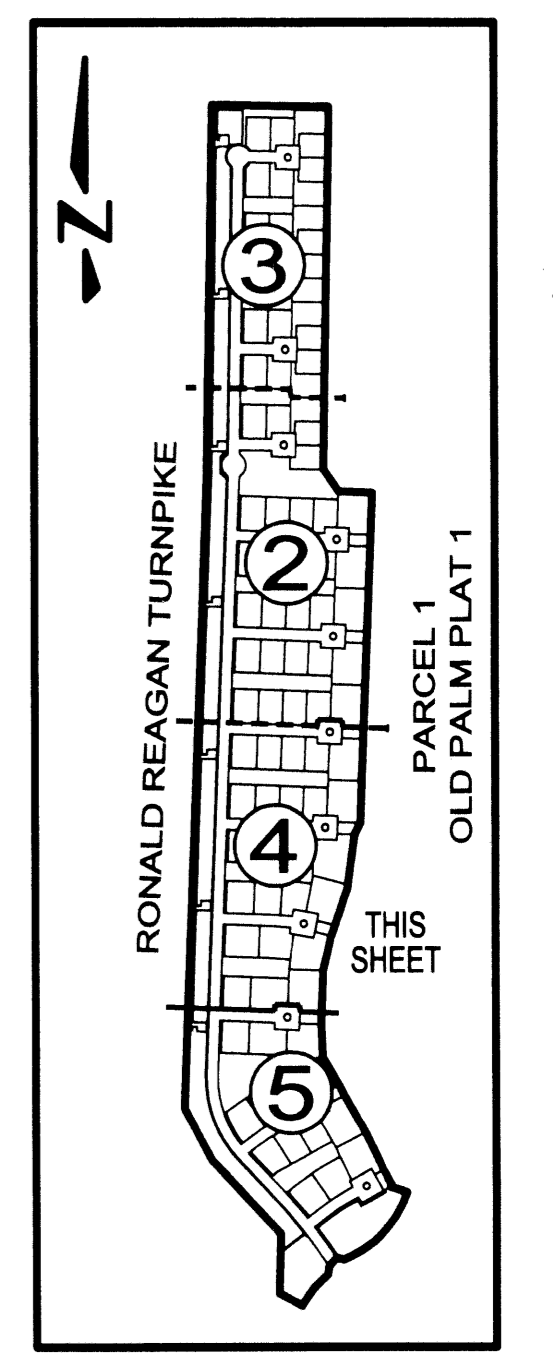
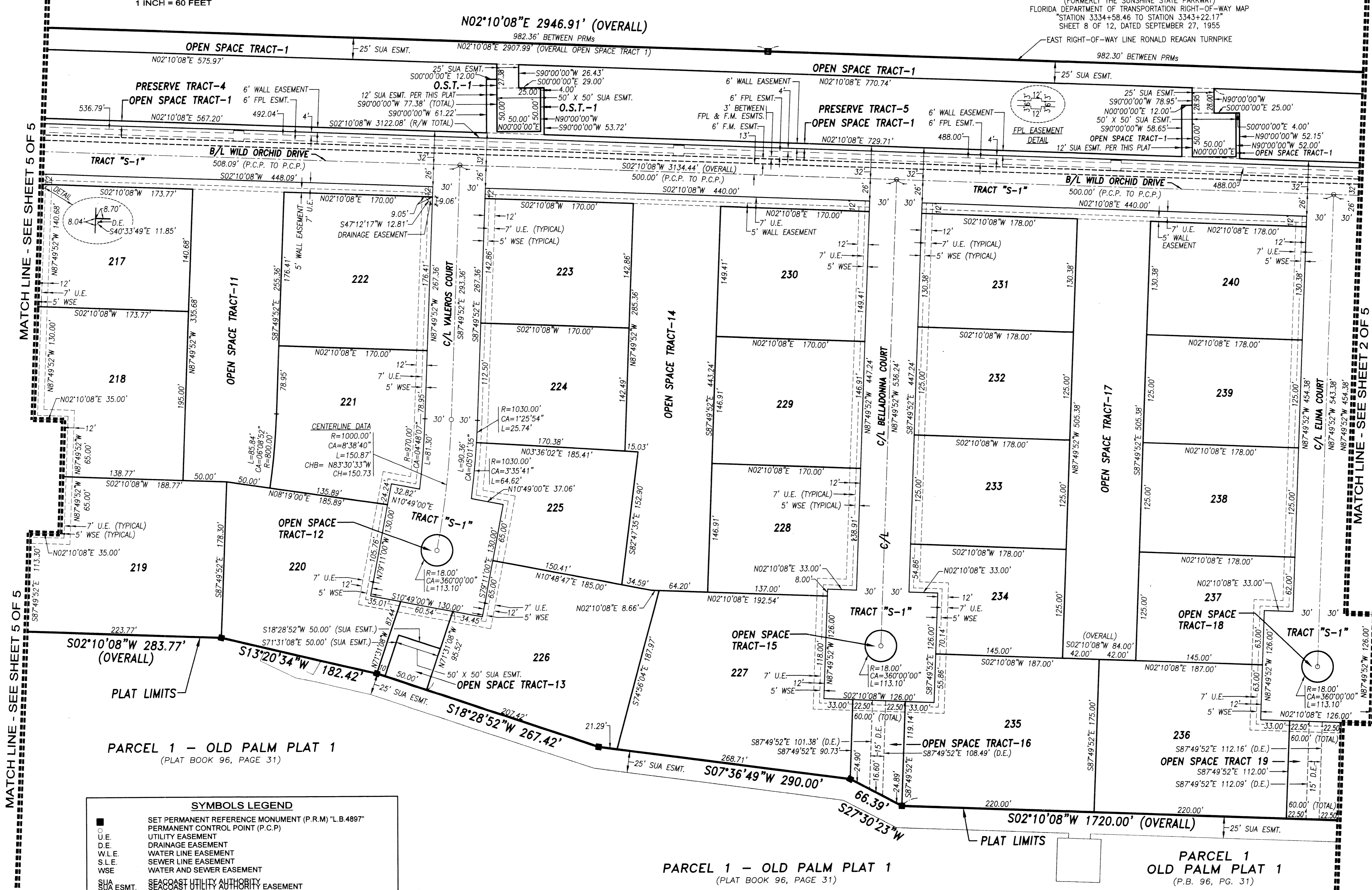


OLD PALM PLAT FOUR

A REPLAT OF A PORTION OF PARCEL 1, OLD PALM PLAT 1 AS RECORDED IN PLAT BOOK 96, PAGES 31 THROUGH 34, PUBLIC RECORDS OF PALM BEACH COUNTY, FLORIDA LYING IN THE SOUTHWEST ONE-QUARTER OF SECTION 35, TOWNSHIP 41 SOUTH, RANGE 42 EAST, AND THE WEST ONE-HALF OF SECTION 2, TOWNSHIP 42 SOUTH, RANGE 42 EAST CITY OF PALM BEACH GARDENS, PALM BEACH COUNTY, FLORIDA SHEET No.4 OF 5 FEBRUARY 2004



RONALD REAGAN TURNPIKE (VARIABLE WIDTH) (FORMERLY THE SUNSHINE STATE PARKWAY) FLORIDA DEPARTMENT OF TRANSPORTATION RIGHT-OF-WAY MAP STATION 3334+58.46 TO STATION 3343+22.17 SHEET 8 OF 12, DATED SEPTEMBER 27, 1955 EAST RIGHT-OF-WAY LINE RONALD REAGAN TURNPIKE



SYMBOLS LEGEND

■	SET PERMANENT REFERENCE MONUMENT (P.R.M.) "L.B.489"		
○	PERMANENT CONTROL POINT (P.C.P.)		
U.E.	UTILITY EASEMENT		
D.E.	DRAINAGE EASEMENT		
W.L.E.	WATER LINE EASEMENT		
S.L.E.	SEWER LINE EASEMENT		
WSE	WATER AND SEWER EASEMENT		
SUA ESMT.	SEACOAST UTILITY AUTHORITY EASEMENT		
F.M.	FORCE MAIN		
FPL	FLORIDA POWER AND LIGHT		
O.R.B.	OFFICIAL RECORD BOOK	R	RADIUS
PG.	PAGE	CA	CENTRAL ANGLE
R/W	RIGHT-OF-WAY	L	ARC LENGTH
C/L	CENTERLINE	CHB	CHORD BEARING
O.S.T.	OPEN SPACE TRACT	CH	CHORD
INT	INTERSECTION	ESMT.	EASEMENT
B/L	BASELINE		
→	CHANGE IN DIRECTION		
P.S.M.	PROFESSIONAL SURVEYOR AND MAPPER		
P.C.P.	PERMANENT CONTROL POINT		
□	FOUND PERMANENT REFERENCE MONUMENT (P.R.M.) "L.B.4431"		

NOTE: THE SUA EASEMENTS SHOWN HEREON, (UNLESS OTHERWISE NOTED) ARE AS DESCRIBED IN OFFICIAL RECORD BOOK 16089, PAGE 1938 OF THE PUBLIC RECORDS OF PALM BEACH COUNTY, FLORIDA.



Keshavarz & Associates, Inc.
CONSULTING ENGINEERS - SURVEYORS
711 N. Dixie Highway, Suite 201
West Palm Beach, Florida 33401
Tel: (561) 689-8600 Fax: (561) 689-7476 LB 4897
THIS INSTRUMENT WAS PREPARED BY MICHAEL K. HORAN SR., PSM
PROFESSIONAL SURVEYOR AND MAPPER NO. 5494
IN THE OFFICES OF KESHAVARZ & ASSOCIATES, INC.